

VERINT®

ONCAM C-12 Series

Quick Installation Guide

All users should read the user manuals for camera installation, usage, functionality and nominal power consumption values.

This product is intended for indoor use and should be supplied by a UL listed power supply marked PoE 802.3af PoE Class 3 compliant or UL listed 12V DC 0.85A or 24V AC 0.62A power supply.

ONCAM C-12 Indoor Camera



Package Contents



CAMERA ENCLOSURE



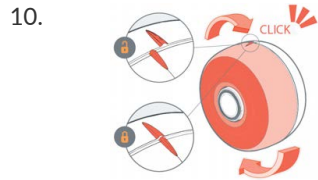
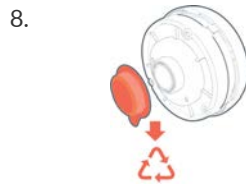
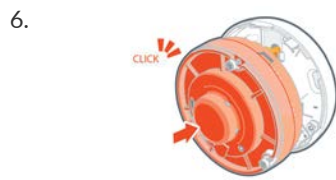
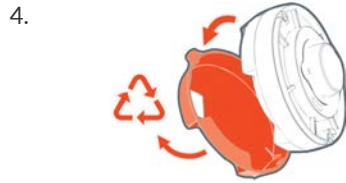
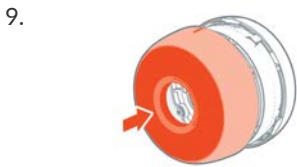
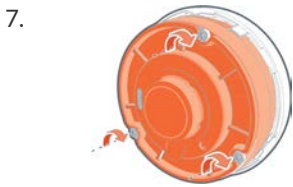
CAMERA MODULE



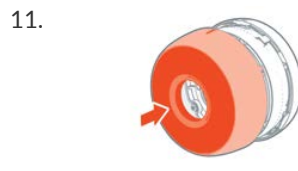
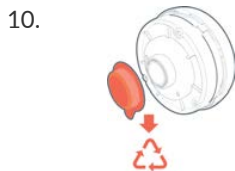
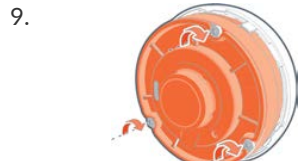
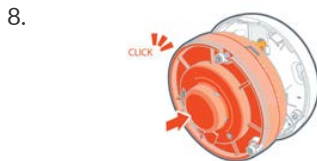
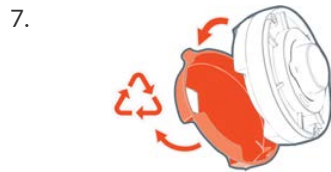
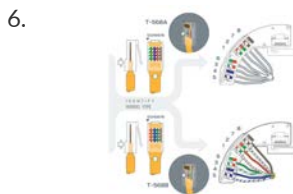
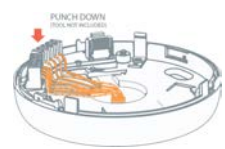
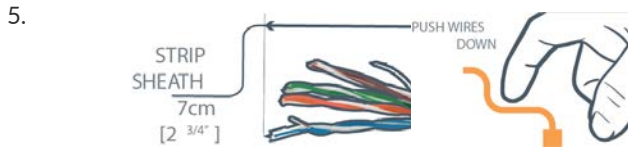
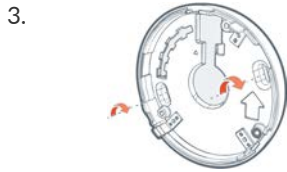
PUNCHDOWN BOARD

HEX TOOL *NOTSHOWN

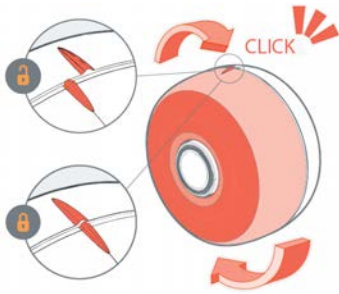
Installation - RJ45



Installation - Punch Down

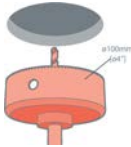


12.

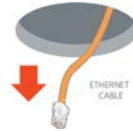


Installation - RJ45 Recess

1.



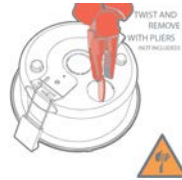
2.



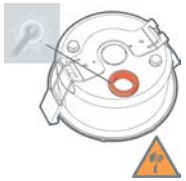
3.



4.



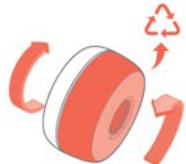
6.



7.



8.



9.

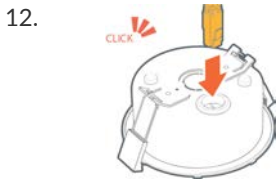


10.

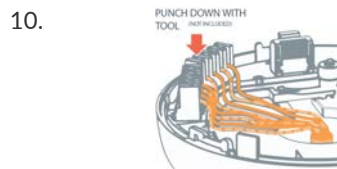
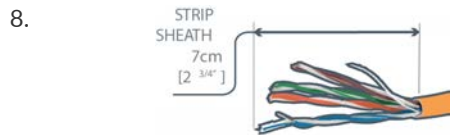
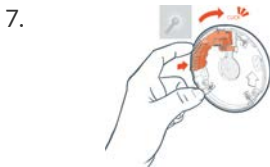
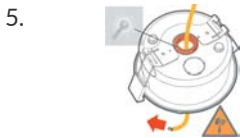


11.

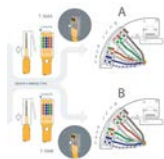




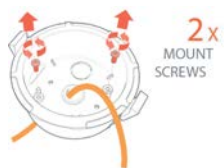
Installation - Punch Down Recess



11.



12.



13.



14.



14.



15.



16.



17.



ONCAM C-12 Outdoor Camera



Package Contents



CAMERA
ENCLOSURE



CAMERA
MODULE



PUNCHDOWN
BOARD



RJ45 CAP



SPARE CABLE
GLAND

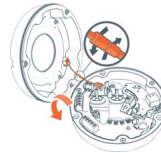
HEX TOOL NOT SHOWN

Installation - RJ45

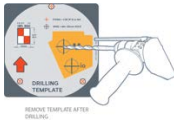
1.



2.



3.



4.

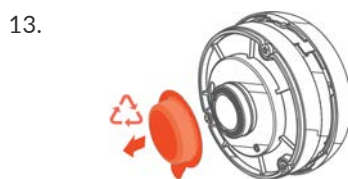


5.

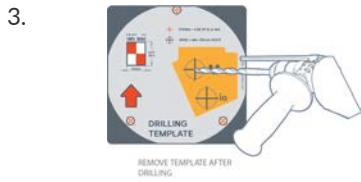
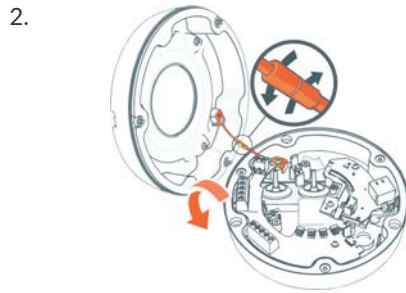


6.

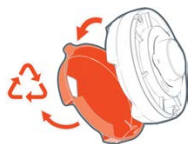




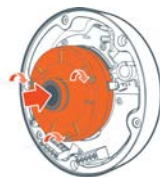
Installation - Punch Down



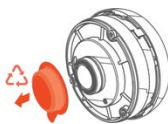
10.



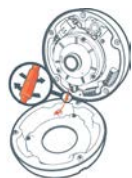
11.



12.



13.



14.



15.



Setting a Static IP Address and Password




You must first assign a static ip address and set the administrator password in the cameras before configuring the cameras in the EdgeVR. The EdgeVR does not support connecting to the C-series camera using the factory default administrator password. The EdgeVR will not recognize the cameras and generate a password mismatch error message.

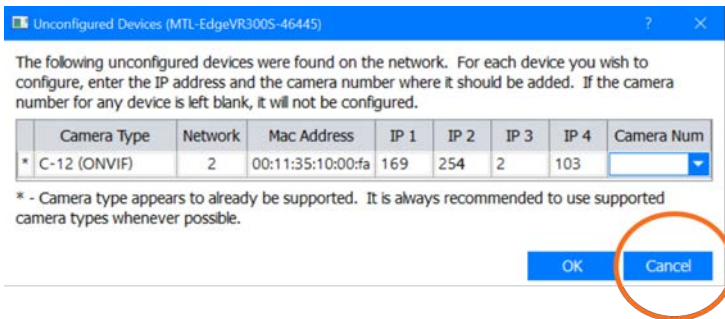
1. Connect the camera to the DVR LAN.



Verify that the camera is on and wait for two minutes to make sure that it is fully started.

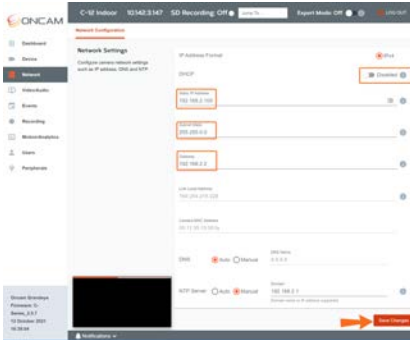
2. Open the **Auto Config Cameras** dialog.

In	Do
VVI	<ol style="list-style-type: none">a. From the Device tree, next to an EdgeVR, click  and select Service.b. Select the Setup tab.c. Under the DVR Properties area, click Auto Config Cameras.
Vid-Center	From the Task Center pane, select Setup DVRs , then in the Task Actions pane, double-click Auto Config Cameras .



3. Write down the cameras APIPA IP Address shown.
4. Click **Cancel**.
5. Click **Disconnect**.
6. Change your laptop IP address to be 169.254.0.1, 255.255.0.0, make sure your laptop is connected to the same LAN as the camera.
7. In a web browser, type the APIPA IP address of the camera.
8. In the **Username** box, set the username to **admin** (all lowercase).
9. In the **Password** box, set the Administrator password to **Oncam01!**

12. From the left menu, select **Network**.



13. Disable DHCP.

14. In the **Static IP Address** box, type a static IP address using the IP scheme for the camera LAN (Usually 192.168.1.x).


15. From the left menu, select **Video/Audio** and then from the top menu select **Image Settings**.

16. Under **Advanced Light Management Technology** for **Exposure Priority**, select **Frame Rate**.

17. From the bottom, click **SAVE CHANGES AND REBOOT**.

18. Reconnect to the DVR using VVI or Vid-Center.

19. Open the **Camera Setup** dialog.

In	Do
VVI	<ol style="list-style-type: none"> From the Device tree, next to an EdgeVR, click  and select Service. Select the Setup tab. Under the DVR Properties area, click Camera Setup.
Vid-Center	From the Task Center pane, select Setup DVRs , then in the Task Actions pane, double-click Camera Setup .

20. In the **Label** box, type a descriptive name for the connected camera.

21. From the **Type** list, choose **ONCAM C-12 360-view** or **ONCAM C-12 360 view WDR single stream**.

22. In the **Address: Port** box, type the camera IP address.

23. Click **OK** to reboot the EdgeVR.

24. Reconnect to the EdgeVR and check the status logs to verify that the camera is connected.

25. Adjust the Recorded and Live video properties and configure motion detection sensitivity for each camera added to the system.

